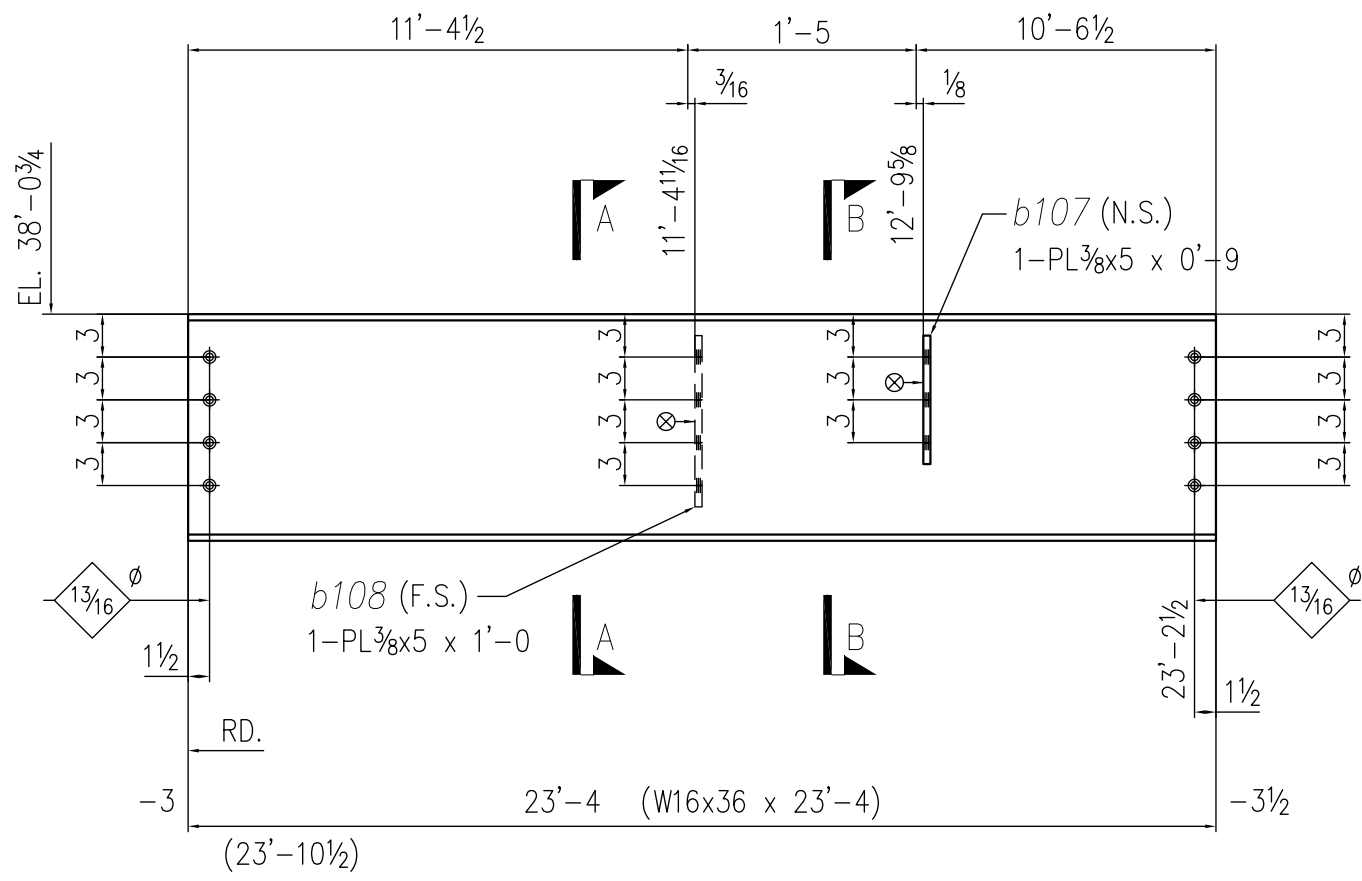


SHOP USE ONLY

CUT	
FIT	
WLD	
PNT	
QC	

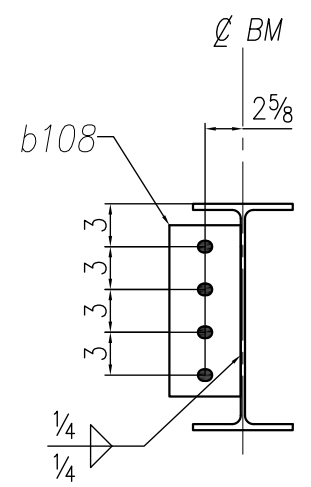

**MATERIALS (ASTM)**  
W-SHAPES: A992  
PLATE/BAR: A36  
ANGLES: A36  
CHANNELS: A36  
PIPE: A53, Gr. B  
HSS: A500, Gr. B  
BOLTS: A325N, UNO  
WELDING: AWS E70XX

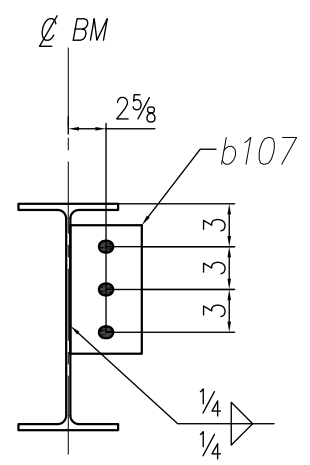
4-3/4" A325 1 3/4

4-3/4" A325 1 3/4

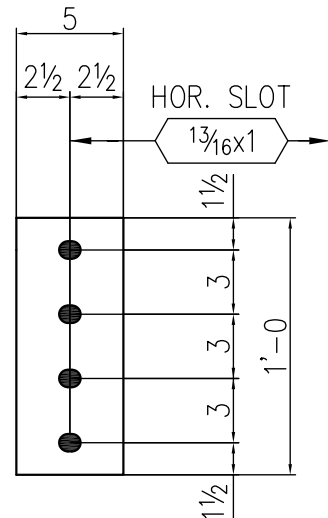
ONE ~ BEAM ~ 254B1  
REF: E201



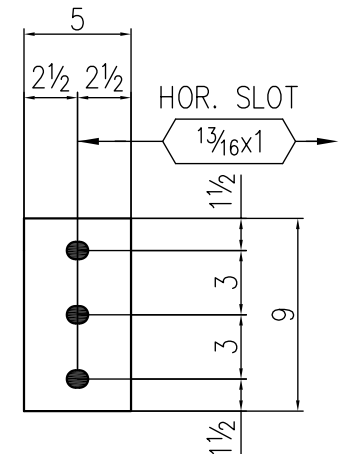
SECTION A-A



SECTION B-B



DETAIL ~ b108



DETAIL ~ b107

FIELD BOLTS  
8-3/4" A325 1 3/4

QTY	DESCRIPTION	LENGTH		MARK	REMARKS	WEIGHT
		FT	IN			
ONE	BEAM			254B1		
ONE	W16x36	23	4			840.0
1	PL 3/8x5	1	0	b108		6.4
1	PL 3/8x5	0	9	b107		4.8
	TOTAL WEIGHT					851.20

ISSUE / REV	BY	DATE	DESCRIPTION	PAIN: STD. GREY PRIMER	STRUCTURE		
	HK	7/2/21	FOR APPROVAL	MILL THCK:	LOCATION		
	-	-	-	CLEAN: SP2	CUSTOMER		
	-	-	-	AESS: NO	DRAWN HK	SHOP ORDER	SHEET NO.
	-	-	-	NOMMA: NA			
	-	-	-	OTHER:	CHECKER -	254	A
-	-	-	REF:				