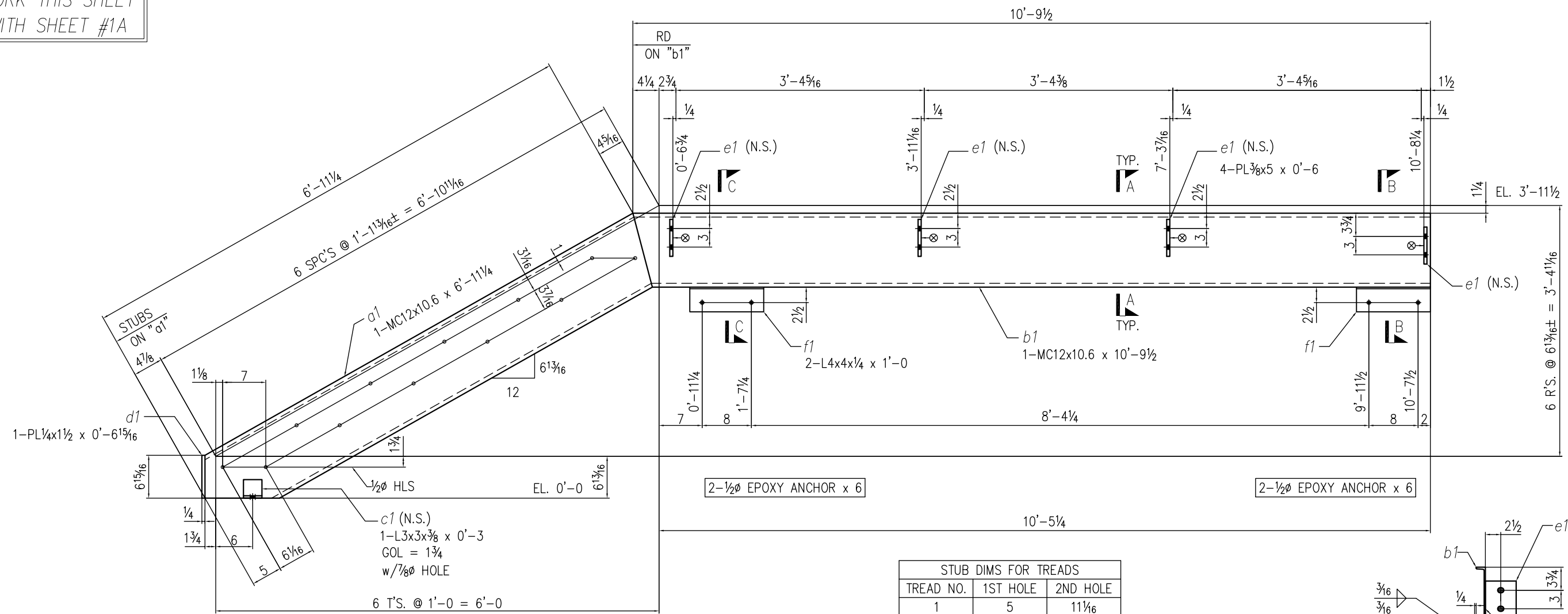


WORK THIS SHEET WITH SHEET #1A

SHOP USE ONLY

CUT	
FIT	
WLD	
PNT	
QC	

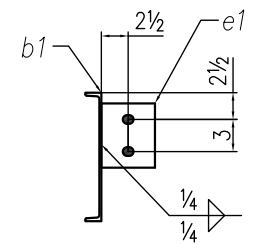


1-3/4" WEDGE ANCHOR x 5

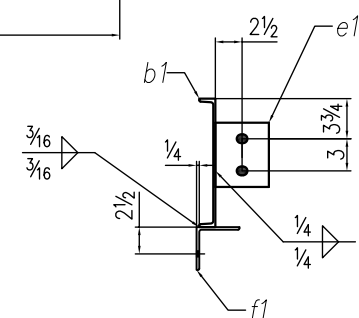
2-1/2" EPOXY ANCHOR x 6

2-1/2" EPOXY ANCHOR x 6

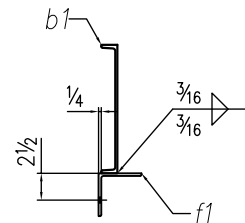
STUB DIMS FOR TREADS		
TREAD NO.	1ST HOLE	2ND HOLE
1	5	11 1/16
2	1'-6 3/4	2'-0 7/8
3	2'-8 9/16	3'-2 5/8
4	3'-10 5/16	4'-4 7/16
5	5'-0 1/8	5'-6 3/16
6	6'-1 7/8	6'-8



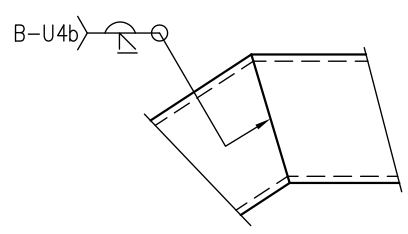
SECTION A-A



SECTION B-B



SECTION C-C



WELD DETAIL AT DOGLEG

ONE ~ STRINGER ~ 1ST1 (GALV)

REF: ME1

NOTES:

1. ALL STEEL ARE GALVANIZED U.N.O.
2. ALL WELDING TO BE 3/16" FILLET AROUND WELD, SMOOTH WELD U.N.O.
3. SEE SHEET #1A FOR SUBPART DETAILS

FIELD BOLTS

1-3/4" WEDGE ANCHOR x 5
4-1/2" EPOXY ANCHOR x 6

QTY	DESCRIPTION	LENGTH		MARK	REMARKS	WEIGHT
		FT	IN			
ONE	STRINGER			1ST1	GALV	
1	MC12x10.6	6	11 1/4	d1		73.5
1	MC12x10.6	10	9 1/2	b1		114.4
1	L3x3x3/8	0	3	c1		1.8
1	PL1/4x1 1/2	0	6 15/16	d1		0.7
4	PL3/8x5	0	6	e1		12.8
2	L4x4x1/4	1	0	f1		13.2
	TOTAL WEIGHT					216.40

ISSUE / REV	BY	DATE	DESCRIPTION	PAIN: SHOP PRIMED	STRUCTURE		
	HK	8/18/21	FOR FABRICATION	MILL THCK:	LOCATION		
	-	-	-	CLEAN: SP2	CUSTOMER		
	-	-	-	AESS: NO	DRAWN HK	SHOP ORDER	SHEET NO.
	-	-	-	NOMMA: NA	CHECKER -		REV
			OTHER:				
			REF:				

MATERIALS (ASTM)  
W-SHAPES: A992  
PLATE/BAR: A36  
ANGLES: A36  
CHANNELS: A36  
PIPE: A53, Gr. B  
HSS: A500, Gr. B  
BOLTS: A325N, UNO  
WELDING: AWS E70XX

1	△
---	---